



### Privacy options

Extra-height doors and panels available when additional privacy is needed.

## Stainless Steel

Mills takes this popular look to the limit with seamless panels.

- Facing sheets of panels and doors integrally locked together. Corners are welded smooth or adhered with a corner clip
- The Permaseal™ design is stronger than conventional crown molding construction
- Extra-height doors and panels available when additional privacy is needed
- The finish wraps completely around the edges
- GREENGUARD Gold Certified

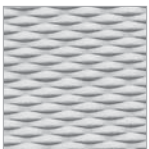




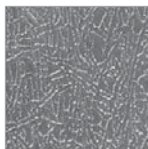
## Stainless Steel Textures



Satin



5WL Textured



Leather Grain

## The Permaseal™ Edge

Mills' exclusive Permaseal edge is available in Stainless Steel or Powder Coated (see pg 6).

The Permaseal design locks facing metal sheets integrally together around the perimeter of the panel.

- 15-year warranty against rust-out – best in the industry.
- No moisture penetration
- No rust