

Expanded

Quick Ship USA

Metal Partitions in 2 Business Days

More Colors!



More Metal Toilet Partitions Available in 2 Business Days in the USA!

- Headrail Braced
- Up to 30 Units
- 2 Stainless Steel Finishes
- 12 Powder Coated Colors

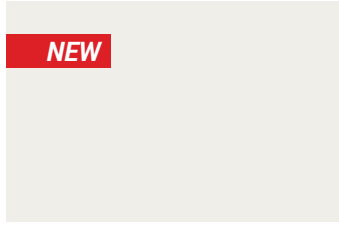
Available Finishes:

504 Linen 535 Light Grey 603 Almond	510 Black 532 Latte 545 Charcoal	585 Sahara 607 Bordeaux 609 Colonial Blue	621 Slate 828 Dovetail 814 Cast Iron	#4 Brushed Stainless Steel Embossed Stainless Steel
---	--	---	--	--

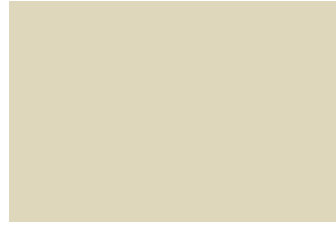
SOLID COLORS



535 Light Grey



541 Extra White



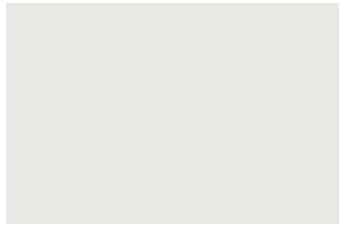
603 Almond



607 Bordeaux



621 Slate



504 Linen



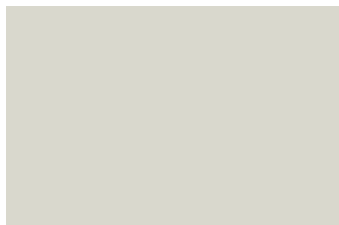
532 Latte



576 Ruby Red



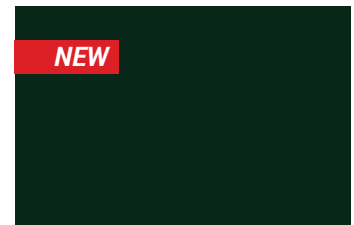
545 Charcoal



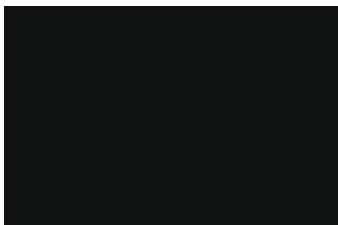
500 White



585 Sahara



581 Moss Green



510 Black



639 Sapphire Blue

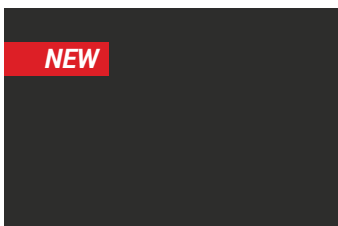


609 Colonial Blue

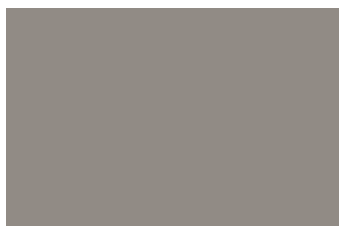
Headrail braced toilet partitions stocked in USA.
 Headrail braced toilet partitions stocked in Canada.

ANTI-GRAFFITI COLORS (SUBJECT TO UPCHARGE)

Proven ASTM D6578 Graffiti Resistance to easily remove:
• Permanent Marker • Lipstick • Water Based Ink Marker • Wax Crayon • Spray Paint



833 Tricorn Black
SUBJECT TO UPCHARGE



828 Dovetail
SUBJECT TO UPCHARGE

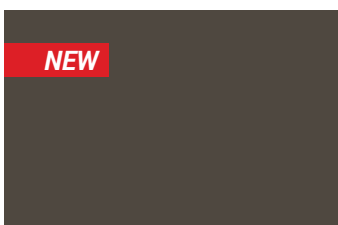


829 Desert
SUBJECT TO UPCHARGE



826 Kilim Beige
SUBJECT TO UPCHARGE

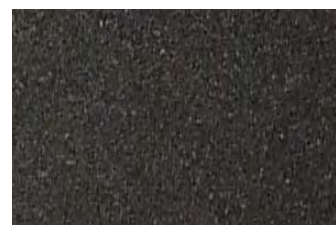
SPECIAL EFFECTS COLORS (SUBJECT TO UPCHARGE)



837 Black Fox
SUBJECT TO UPCHARGE



831 Nickel Metallic
SUBJECT TO UPCHARGE



814 Cast Iron Metallic
SUBJECT TO UPCHARGE

For custom colors, a minimum of 20 units for toilet partitions and 100 units for lockers is required per color. Custom colors are subject to upcharge.

Headrail braced type 304, #4 brushed stainless steel toilet partitions are stocked in the USA. Lockers are not available in stainless steel.